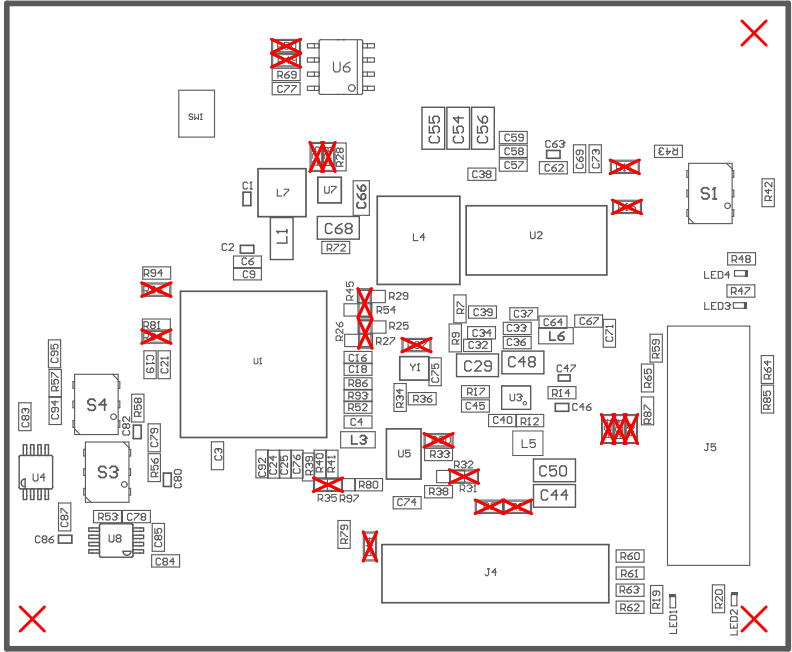


Z24 ■These assemblies must comply with workmanship standards IPC-A-610 Class 2, unless otherwise specified.
Z23 ■These assemblies must be clean and free from flux and all contaminants. Use of no clean flux is not acceptable.
Z22 ■These assemblies are ESD sensitive, ESD precautions shall be observed.
Z21 ■Install label in silkscreened box after final wash. Text shall be 8 pt font. Text shall be per the Label Table in the PDF schematic.



COMPONENTS MARKED 'DNP' SHOULD NOT BE POPULATED.
ASSEMBLY VARIANT: 003

PCB VIEWED FROM TOP SIDE	BOARD #: MCU144	REV: E1	SUN REV: Not in version control
	TID #: N/A		
PLOT NAME = Top Assembly Drawing	GENERATED : 12/9/2024 10:32:11 AM	TEXAS INSTRUMENTS	

